

FLAT CHANNEL GRATES - CLASS D

| SVC Product Code | Weight KG | Clear Opening | | Overall Dimension | | Frame Depth | Product Code |
|------------------|-----------|---------------|-----------|-------------------|-----------|-------------|--------------|
| | | Width mm | Length mm | Width mm | Length mm | | |
| Hume | 60 | 350 | 900 | 365 | 1040 | 65 | 25.850 |
| 94D | 70 | 400 | 900 | 470 | 1040 | 65 | 25.851 |
| Darebin | 80 | 525 | 900 | 595 | 1040 | 65 | 25.873 |
| VR1322 | 90 | 525 | 1000 | 595 | 1140 | 65 | 25.882 |



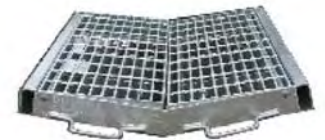
CHANNEL V GRATES

| SVC Product Code | Weight KG | Clear Opening | | Overall Dimension | | Frame Depth | Product Code |
|------------------|-----------|---------------|-----------|-------------------|-----------|-------------|--------------|
| | | Width mm | Length mm | Width mm | Length mm | | |
| Casey | 70 | 450 | 900 | 462 | 1030 | 65 | 25.875 |
| WSM2 | 70 | 400 | 900 | 415 | 1000 | 65 | 25.878 |
| SM2 | 70 | 400 | 900 | 415 | 1000 | 65 | 25.877 |



DISHED CHANNEL V GRATES - CLASS D

| SVC Product Code | Weight KG | Clear Opening | | Overall Dimension | | Frame Depth | Product Code |
|------------------|-----------|---------------|-----------|-------------------|-----------|-------------|--------------|
| | | Width mm | Length mm | Width mm | Length mm | | |
| Dish 66D | 60 | 600 | 600 | 705 | 700 | 65 | 25.855 |
| Dish 77D | 100 | 750 | 750 | 850 | 820 | 65 | 25.856 |
| Dish 96D | 80 | 600 | 900 | 705 | 1000 | 65 | 25.854 |

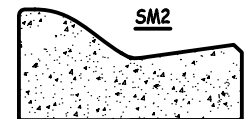


CONCRETE ENCASED

- V GRATE / CHANNEL GRATE

ENCASED KERB & CHANNEL GRATES

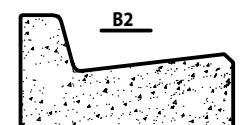
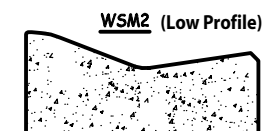
| Kerb Profile | Weight KG | Clear Opening | | Overall Dimension | | Height mm | Product Code |
|--------------|-----------|---------------|-----------|-------------------|-----------|-----------|--------------|
| | | Width mm | Length mm | Width mm | Length mm | | |
| WSM2 | 220 | 400 | 900 | 650 | 1230 | 235 | 21.878 |
| SM2 | 250 | 400 | 900 | 650 | 1230 | 270 | 21.877 |
| Casey R/O | 220 | 450 | 900 | 650 | 1330 | 240 | 21.875 |
| B2 | 255 | 350 | 900 | 650 | 1230 | 295 | 21.850 |



PRECAST CATCH PIT

PRECAST CATCH PIT UNIT

| Weight KG | Clear Opening | | | Overall Dimension | | | Product Code |
|-----------|---------------|-----------|-----------|-------------------|-----------|-----------|--------------|
| | Width mm | Length mm | Height mm | Width mm | Length mm | Height mm | |
| 220 | 400 | 900 | 300 | 600 | 1100 | 400 | 18.275 |



S.V.C PRODUCTS PTY LTD
 38 Japaddy Street, Braeside. 3195.
 Ph.03 9580 6644 Fax.03 9587 2805
 Email:sales@svc.net.au
 www.svc.net.au
 ABN 96 004 279 458